

FORCE
PROMOTION

**VILLEREUSE
PARKING**

www.force-promotion.ch



Geneva



+ 940'000 habitants



2nd biggest city in
Switzerland with over **200**
international organisations



Touristic hotspot : Over **3**
million nights booked in
hotels every year



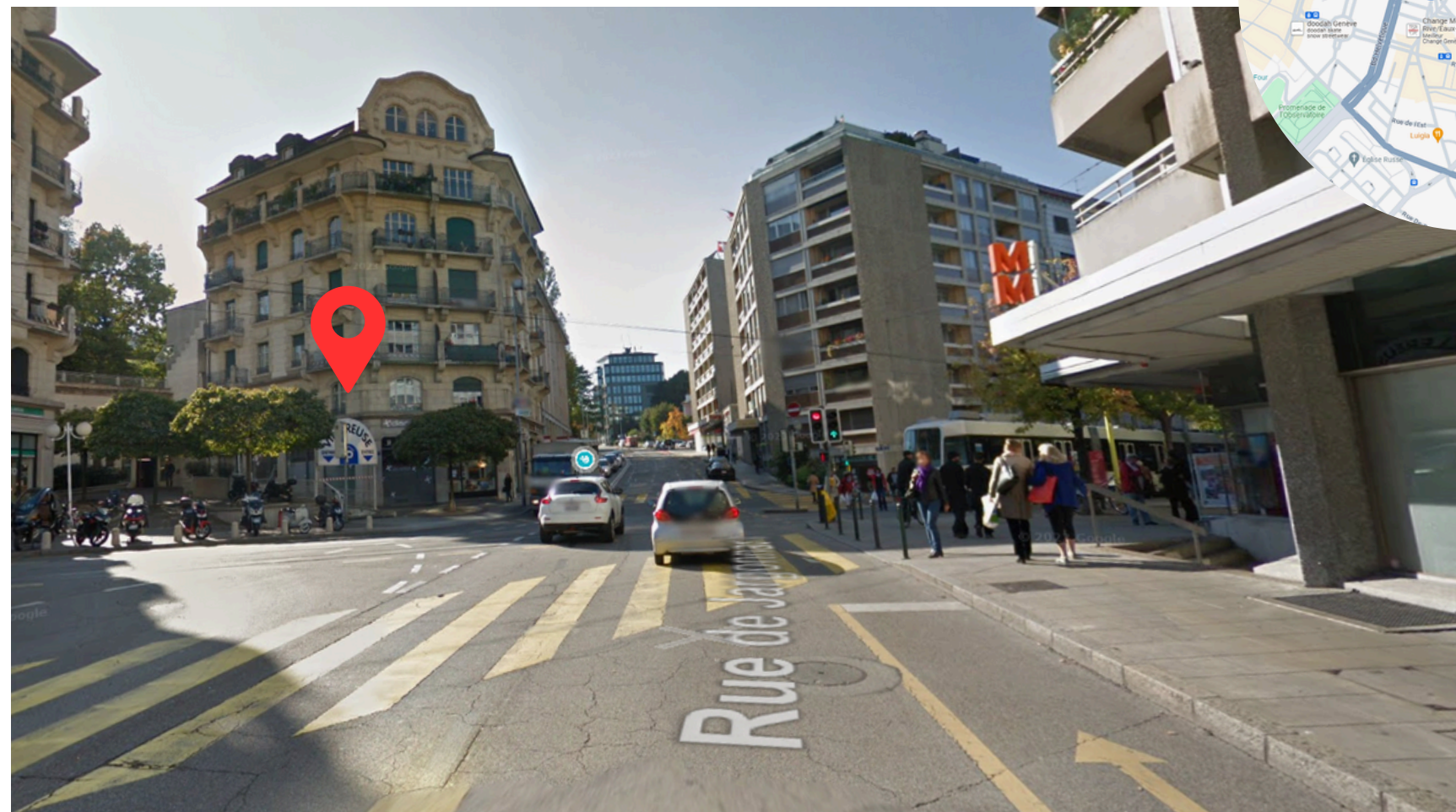
VILLEREUSE PARKING

+ 1'300
daily users

12k sqm
total surface

next to
*popular shopping
areas, museums,
the old town*

24/7
*visibilité
maximum*



ADVERTISE IN VILLEREUSE

Located in the heart of the shopping district of **Eaux-Vives**, the Villereuse car park offers an ideal proximity to reknown museums, a shopping mall, a train station and the main tram lines.

With competitive prices, this car park is the solution chosen by **families** and **professionals** who come to work in the city. The parking users tend to have high **disposable income**, making it an ideal solution for your **advertising campaigns**.



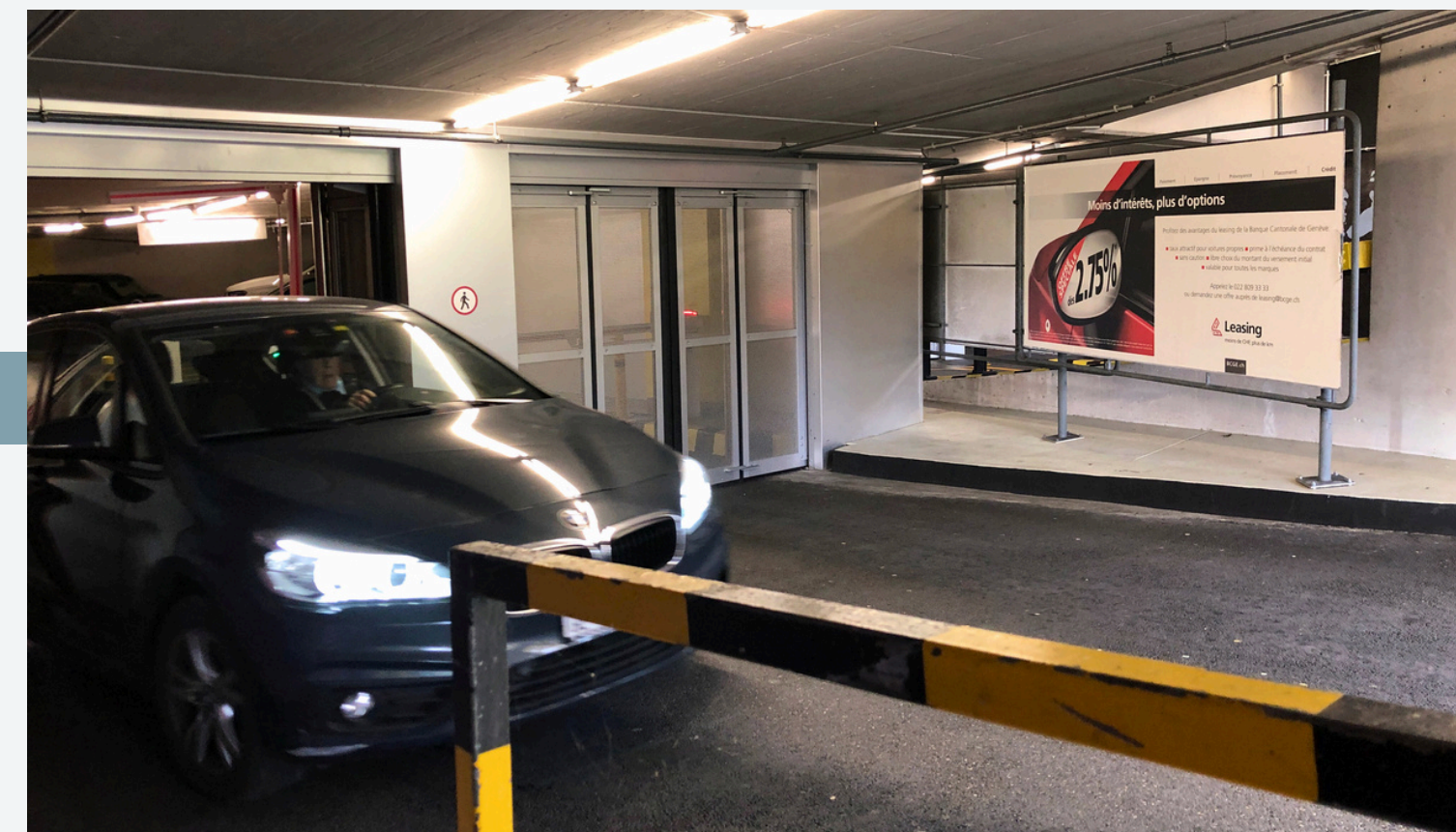
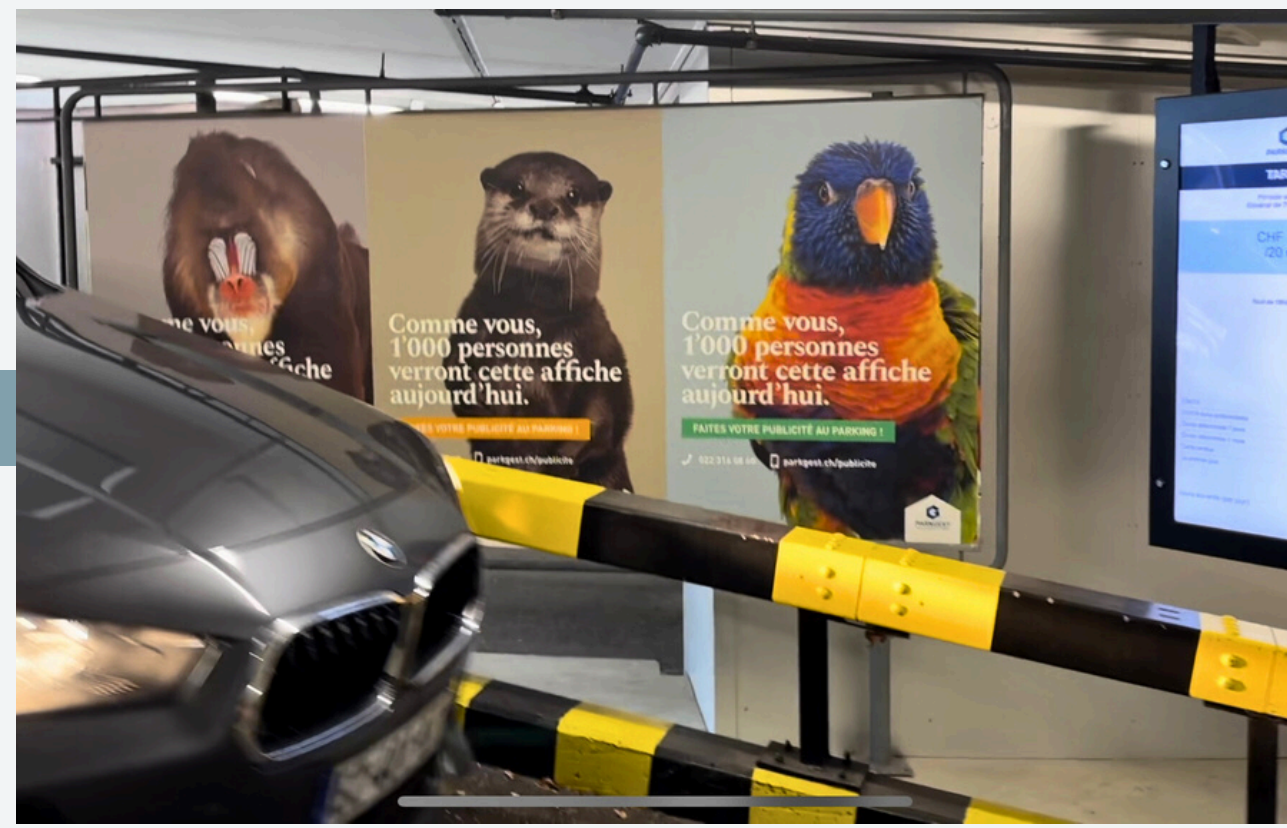
AOL



Illuminated sign next to the **lifts** on **5 floors**.

Get your audience's **attention** in a place **without distractions**.

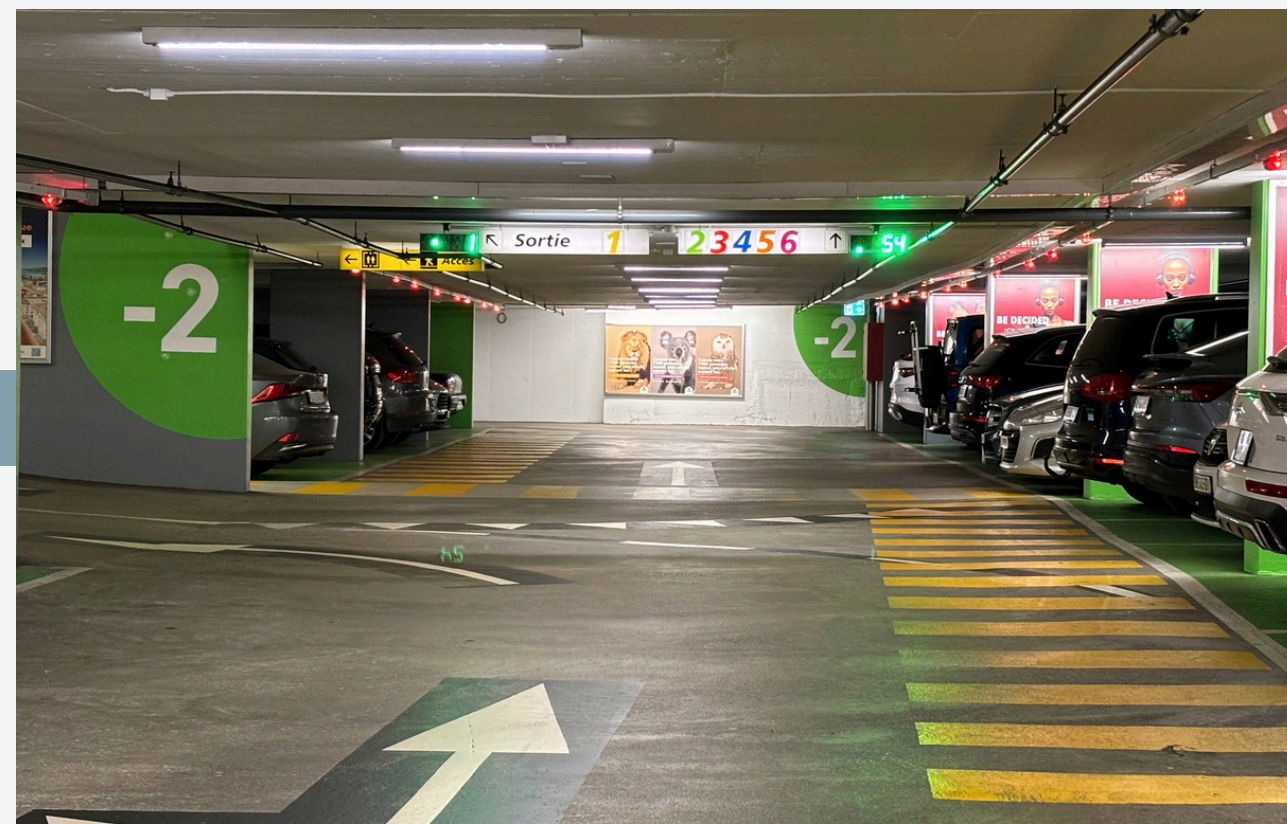
F 1 2



A big format for a big impact.

Ideally situated to reach **pedestrians** and **drivers**.

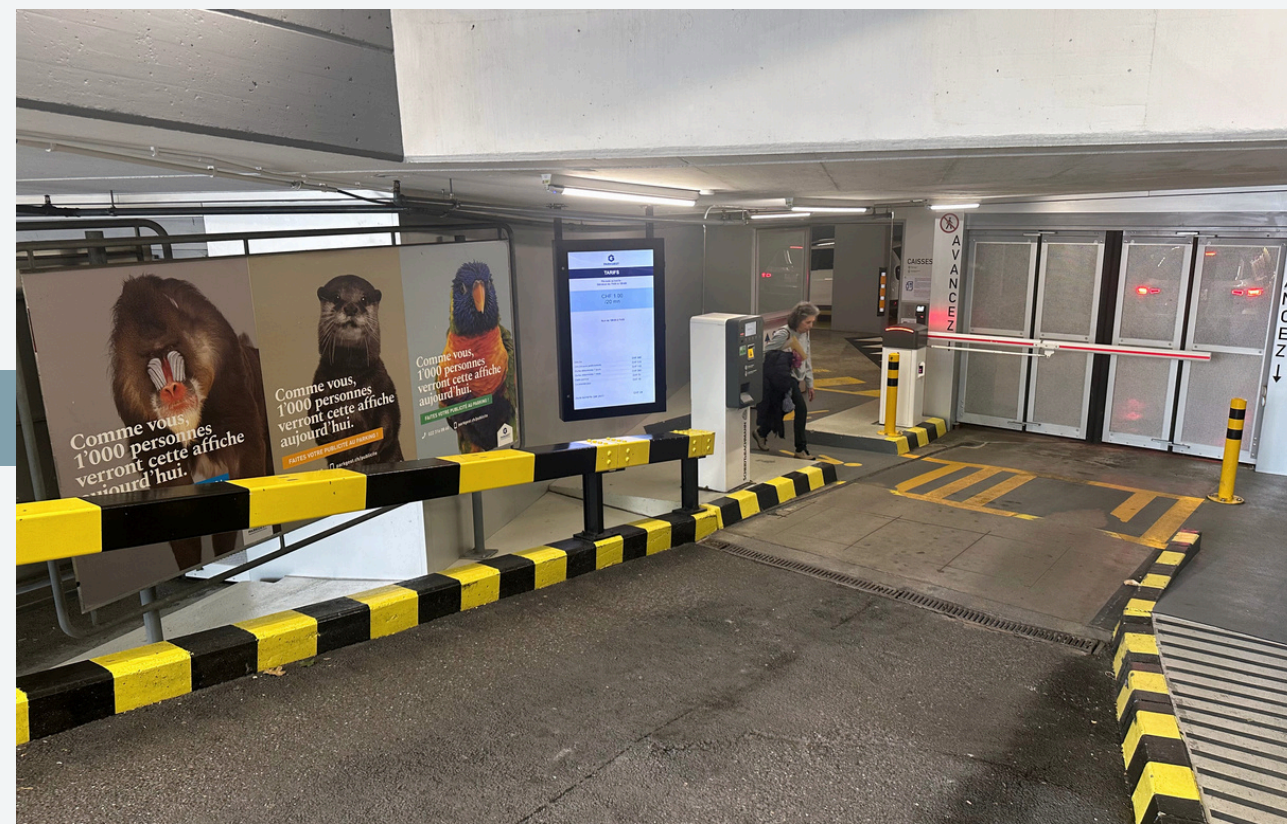
F4 SERIES



Repetition for memorisation.

Equally distributed across all 7 floors. Up to 64 banners.

BARRIERS



example at the Mont-Blanc parking



Your customers are at a standstill facing your brand.

4 barriers to entry and exit.



CONTACT US

022 343 02 02
cbengtsson@force-promotion.ch

FIND US ON
WWW.FORCE-PROMOTION.CH